

Community Consultative Committee – February 2024

14 February 2024



WELCOME AND APOLOGIES



Welcome

Apologies

Declaration of interests

Confirmation of previous minutes

AGENDA



- 1. Actions from previous meeting**
- 2. Correspondence**
- 3. Operational update**
- 4. Approvals**
- 5. Business Arising**
- 6. Environmental Incidents / Non-compliances**
- 7. Environmental Performance**
- 8. Community Complaints & Enquiries**
- 9. Environmental Projects**
- 10. Mine Cottages Rehabilitation Update**

ACTIONS / BUSINESS ARISING FROM PREVIOUS MINUTES



| Action / Business Arising | Action Owner | Update |
|---------------------------|--------------|--------|
| Nil | - | - |

Correspondence since previous meeting

- 23/01/24 – email from MMH to DPE providing the Chairs Annual Report for the CVC and MC Community Consultative Committee.

OPERATIONAL UPDATE

Production

- Production continues in HB-Mains
- Production continues in E2 panel.
- Mar 24 E2 will relocate to E3
- MA1 has 'turned corner' in MA2 panel.
- Production 1 Nov 23 to 31 Jan 24 was 260 kt ROM Coal.
- All coal delivered to Power Station.



OPERATIONAL UPDATE FORWARD PLAN *(draft)*

- CY24 – continue in northern mining area progress MA2 and commence Chain Valley Bay first workings.
- CY25 – Complete northern mining area, continue Chain Valley Bay continue into Mannering North Mining Area
- CY26 – Continue Chain Valley Bay first workings and continue to drive into Mannering North Mining Area.



Current Approvals

Chain Valley Colliery

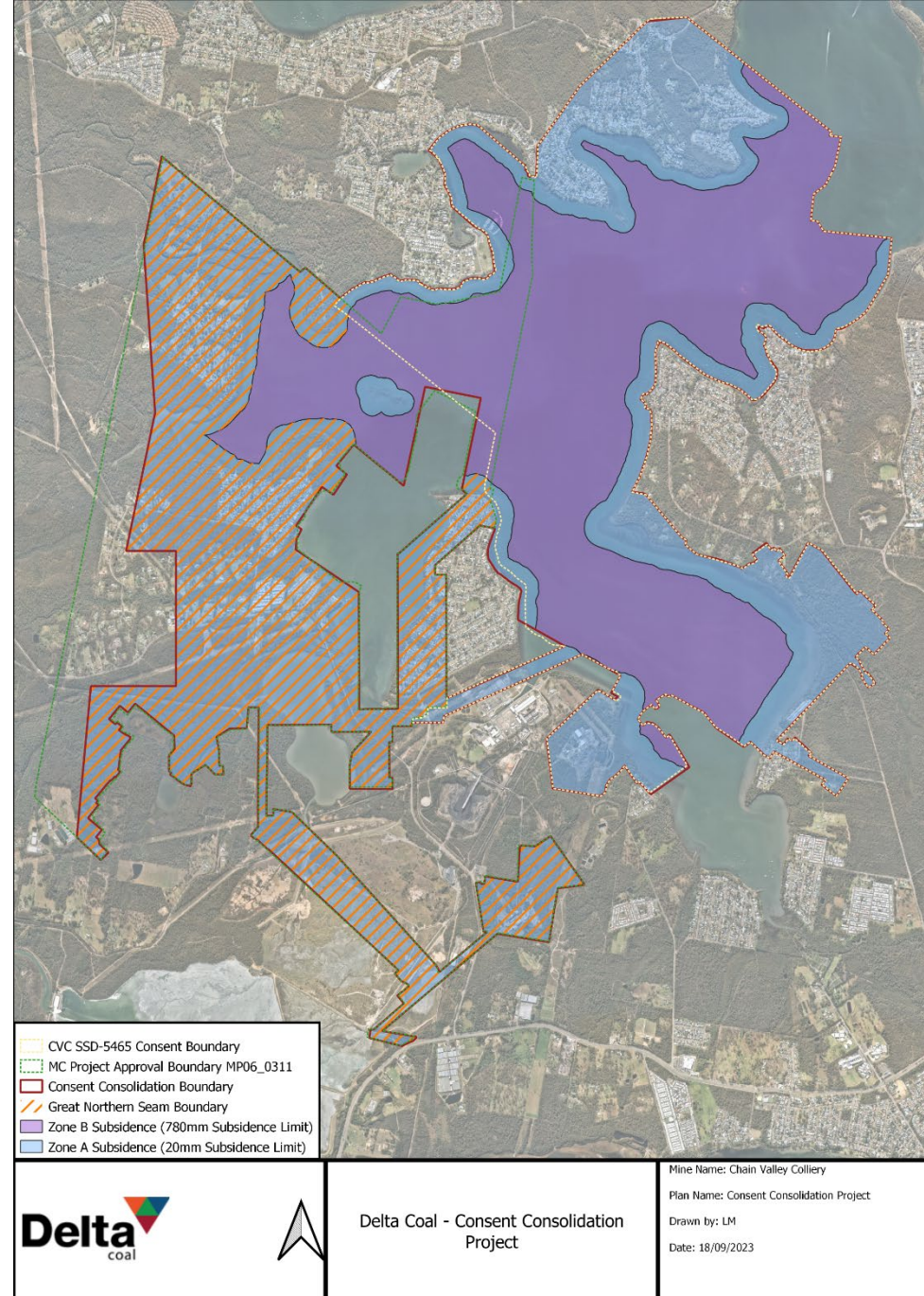
- EPL1770: Environmental Protection License - October 2023
 - EPL 1770 variation to remove effluent management conditions approved by EPA.
- CVC SSD-5465 (MOD 4): Development Consent – August 2021
- Extraction Plan: MWS5 and NPA – March 2021

Mannering Colliery

- EPL 191 – Mannering Colliery – April 2021
- Mannering Colliery Project Approval PA 06_0311 (MOD 5) – June 2020

CONSENT CONSOLIDATION PROJECT

- Crown lands provided ministerial approval for the project area in January 2024.
- Greenhouse Gas report completed by Independent Expert Advisory Panel – Mining (IEAPM). DPE have issued Delta Coal with a request for information to address the report.
- Geotechnical RFI received from IEAPM in January.
- IEAPM unable to address any response until March 24, as such IPC review is likely within Q2 of 2024.



ENVIRONMENTAL INCIDENTS / NON- COMPLIANCES

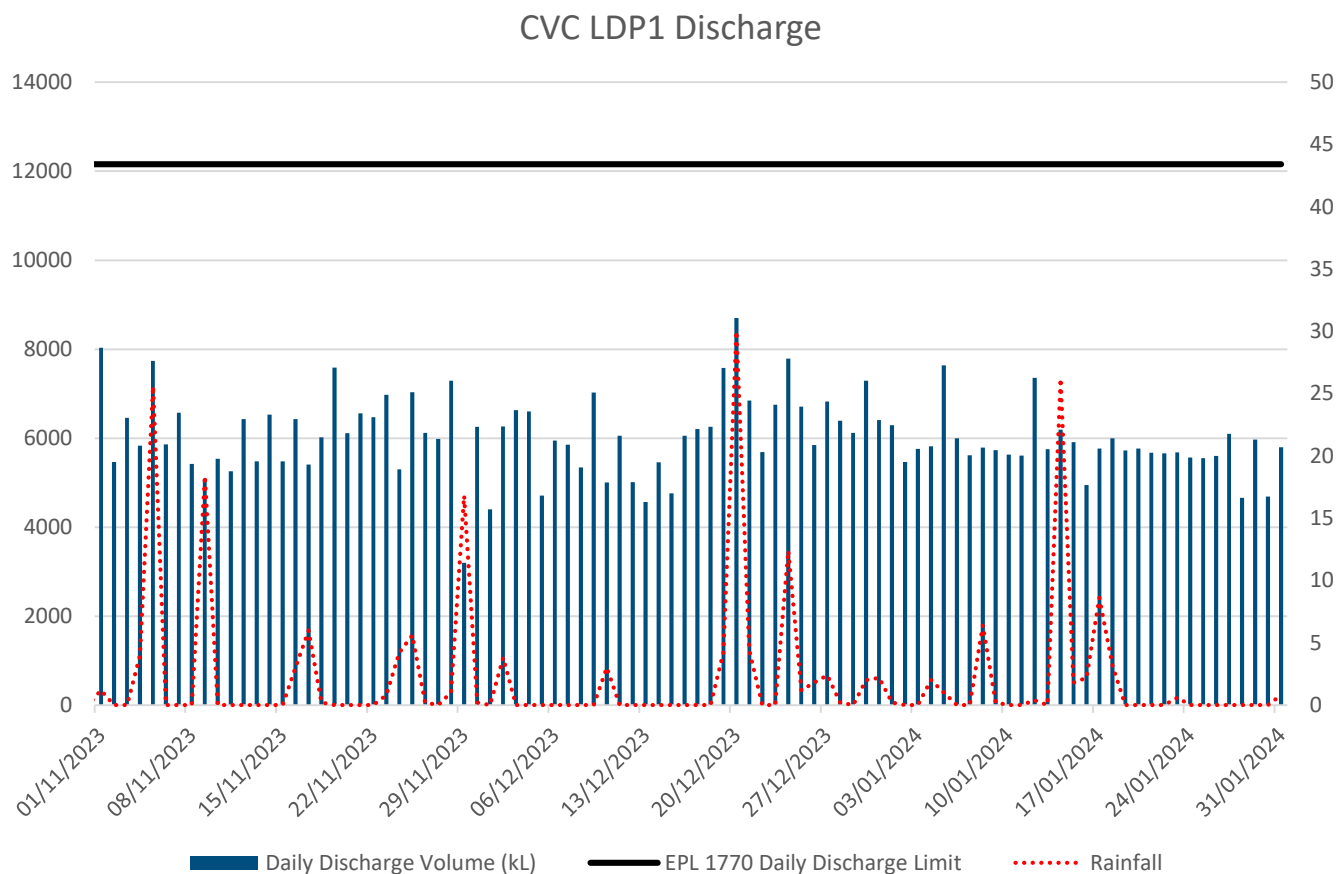


Summary of Incidents and Non-compliances

| Site | Date | Incident / Non-compliance Type |
|------|--------------------|---|
| CVC | 6 Nov 2023 | Faecal Coliform result of 620 CFU/100ml against limit of 200 CFU/100ml. |
| CVC | 1 Nov – 1 Dec 2023 | Exceedance to the maximum total increase in deposited dust level at DDG004. The 12-month rolling average result remains below the annual limit of 4g/m ² /month. |



CVC Surface Water Daily Discharge and Rainfall Volumes



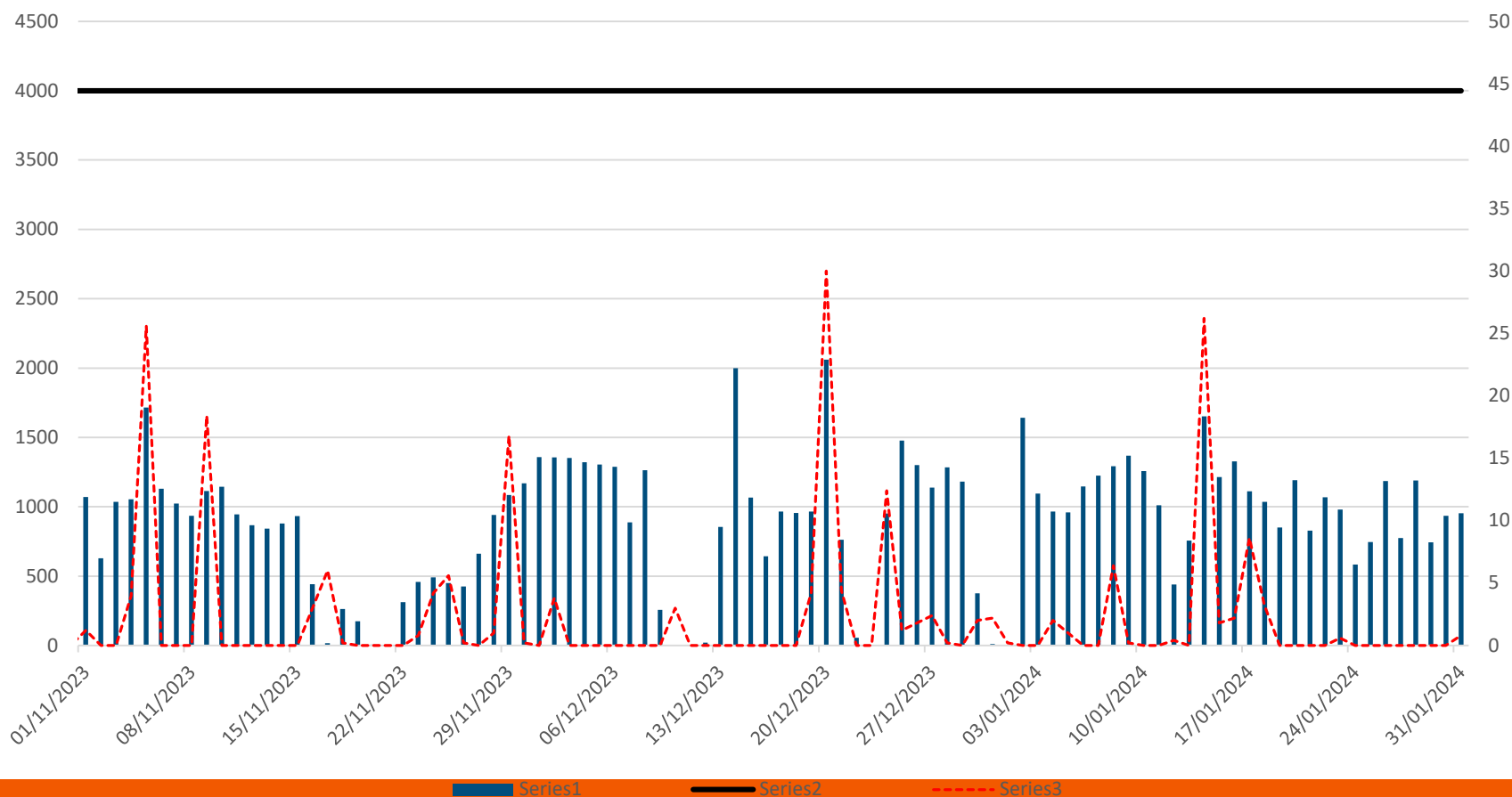
CVC Surface Water Quality Monitoring

| LDP1 | Limits | Nov – 2023 | Dec - 2023 | Jan - 2024 |
|----------------------------------|---|------------|------------|------------|
| Faecal Coliforms (CFU/100ml) | 200 | 620 | 16 | 80 |
| Enterococcus CFU/100ml | 40 Primary Contact (NHMRC, 2008 ¹) 150 Secondary Contact (NHMRC, 2008 ¹) | 220 | 34 | <2 |
| pH (pH Units) | 6.5-8.5 | 7.63 | 7.72 | 7.84 |
| Total Suspended Solids (mg/L) | 50 | 10 | 9 | <5 |
| Oil and Grease (mg/L) | 10 | <5 | <5 | <5 |

¹ National Health and Medical Research Council, *Guidelines for Managing Risks in Recreational Water*, 2008

MC Surface Water Daily Discharge Volume and Rainfall Volumes

Mannering Colliery - Surface Water Daily Discharge Volumes and Rainfall



ENVIRONMENTAL PERFORMANCE



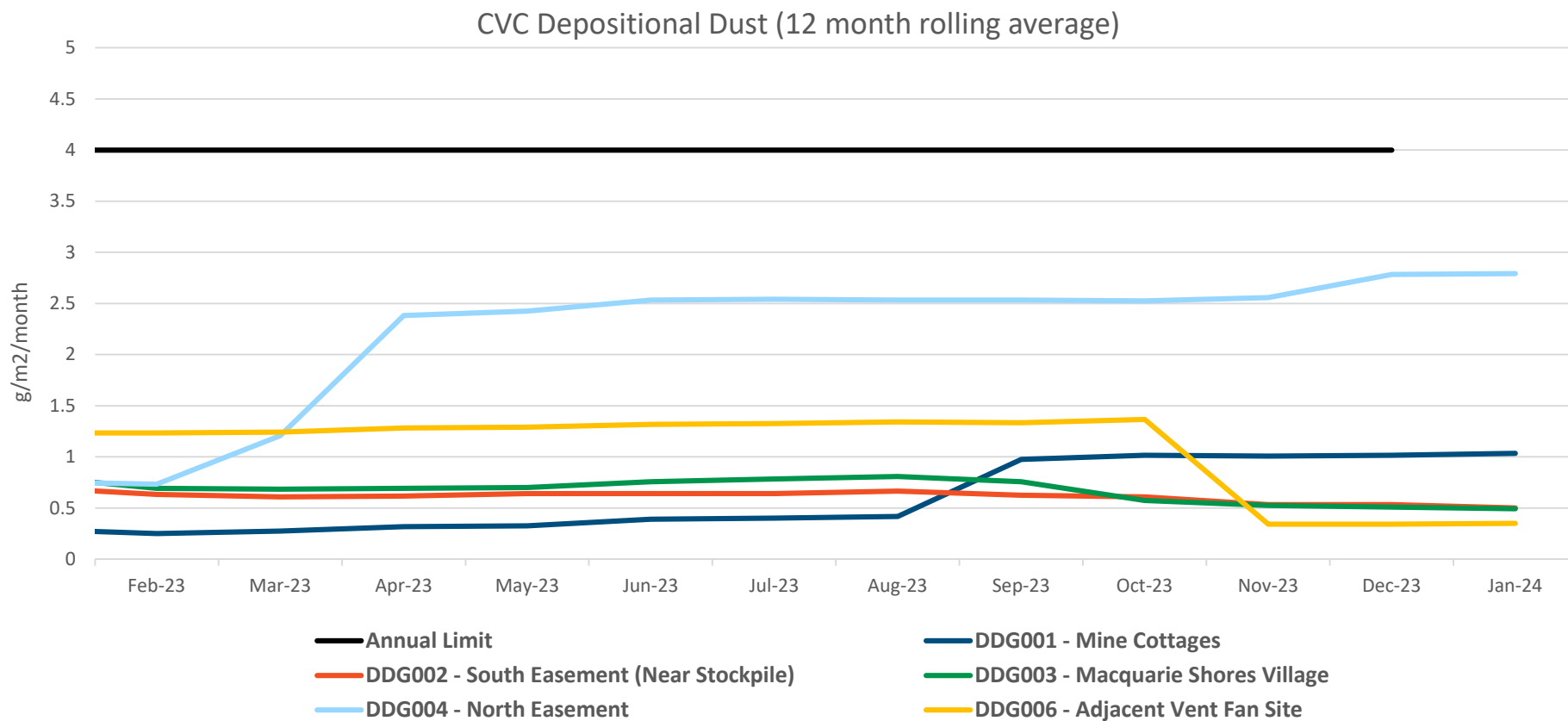
MC Surface Water Quality Monitoring

| LDP1 | Limits | Nov-2023 Average | Dec-2023 Average | Jan-2023 Average |
|----------------------|---------|---------------------|---------------------|---------------------|
| Oil & Grease mg/L | 10 | <5 | <5 | <5 |
| TSS mg/L | 50 | 16 | 12 | <5 |
| pH | 6.5-8.5 | 7.75 | 8.06 | 7.52 |

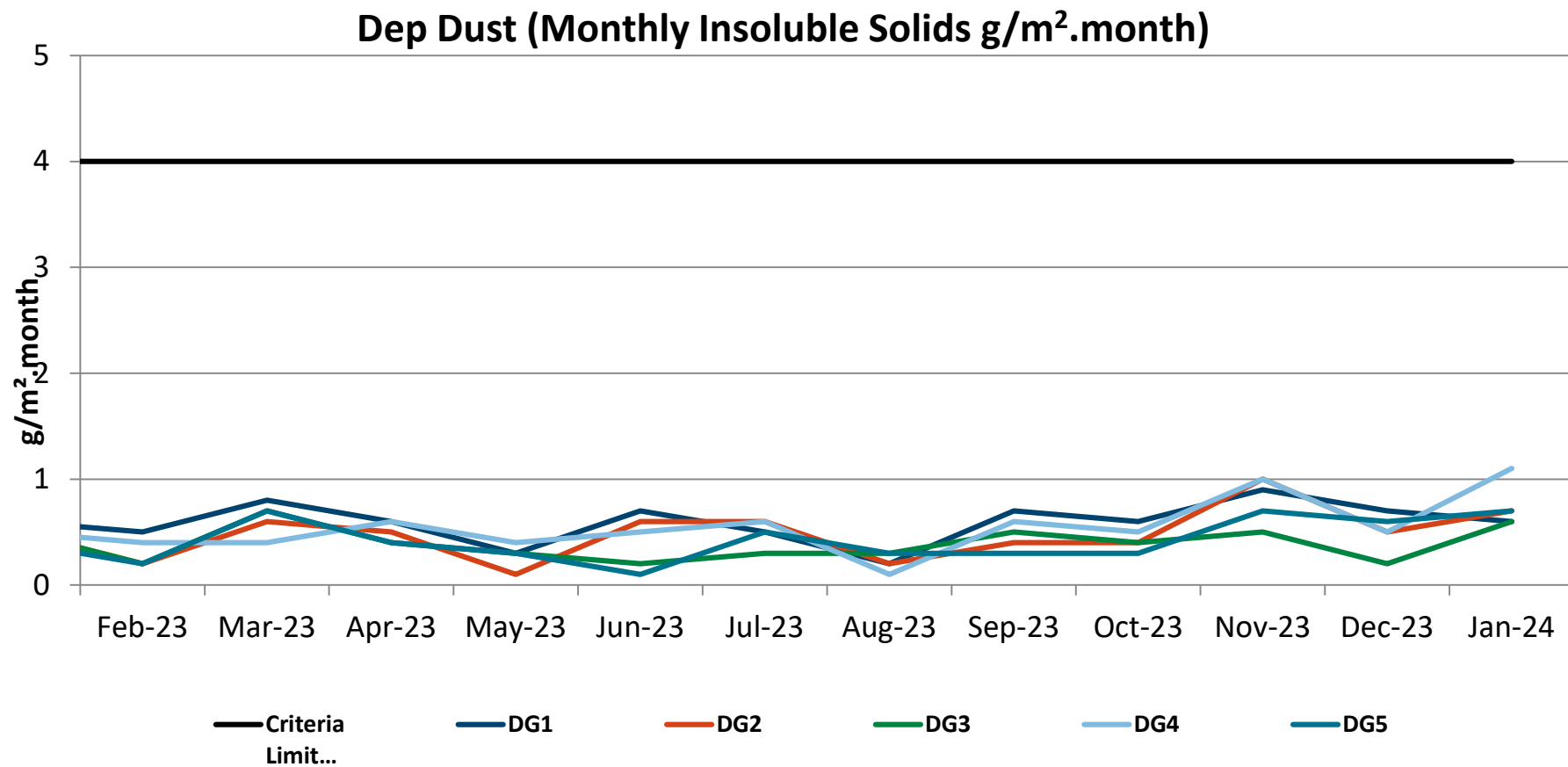
ENVIRONMENTAL PERFORMANCE



CVC Depositional Dust Monitoring

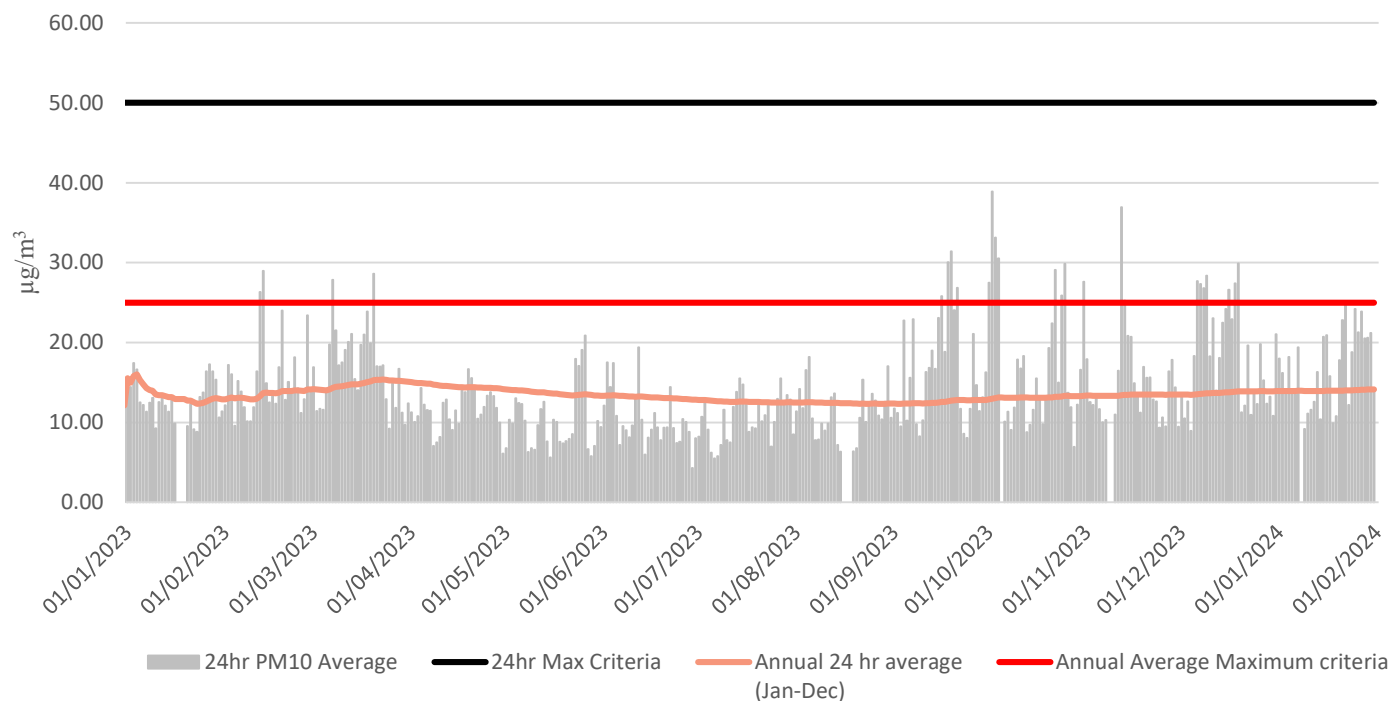


MC Depositional Dust Monitoring



PM₁₀ Monitoring

PM10 ($\mu\text{g}/\text{m}^3$) Monitoring (previous 12 months)

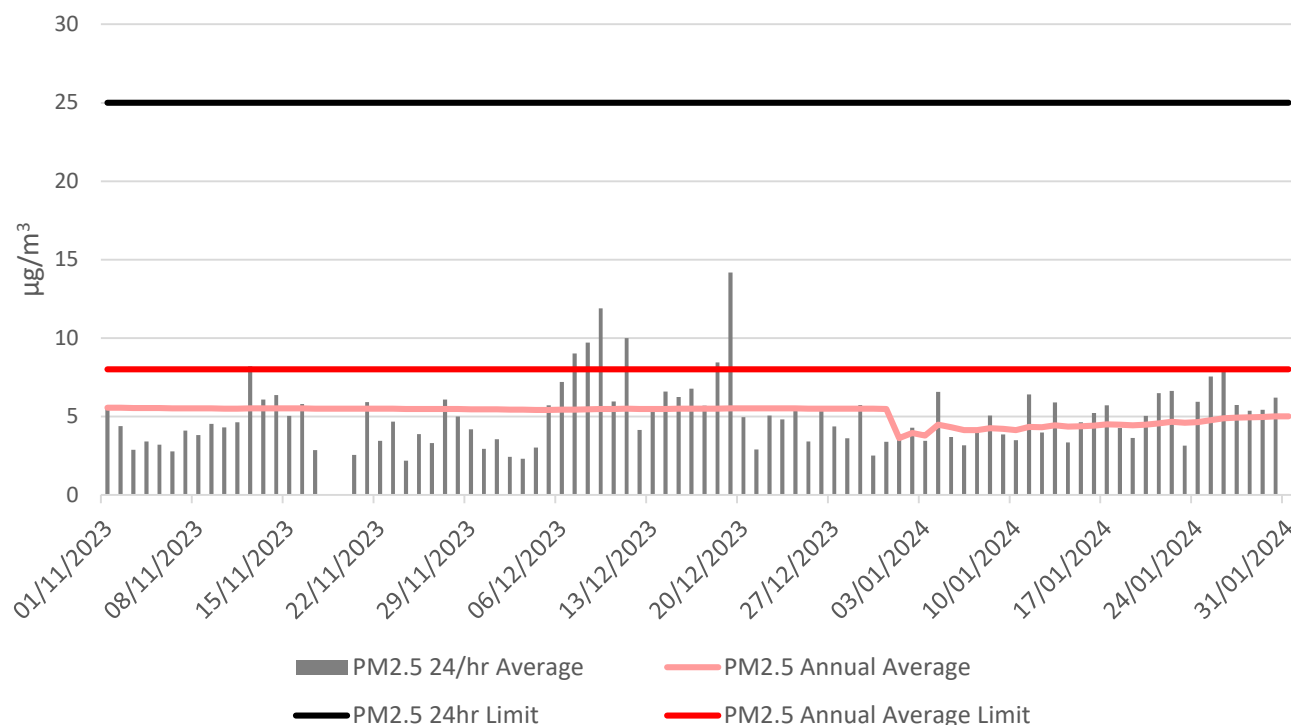


No exceedances of the average annual or 24hr criteria have been observed within the last 12 months.

PM_{2.5} Monitoring

There were no exceedances of the PM_{2.5} daily average limit year to date.

PM_{2.5} Monitoring – Previous 12 months

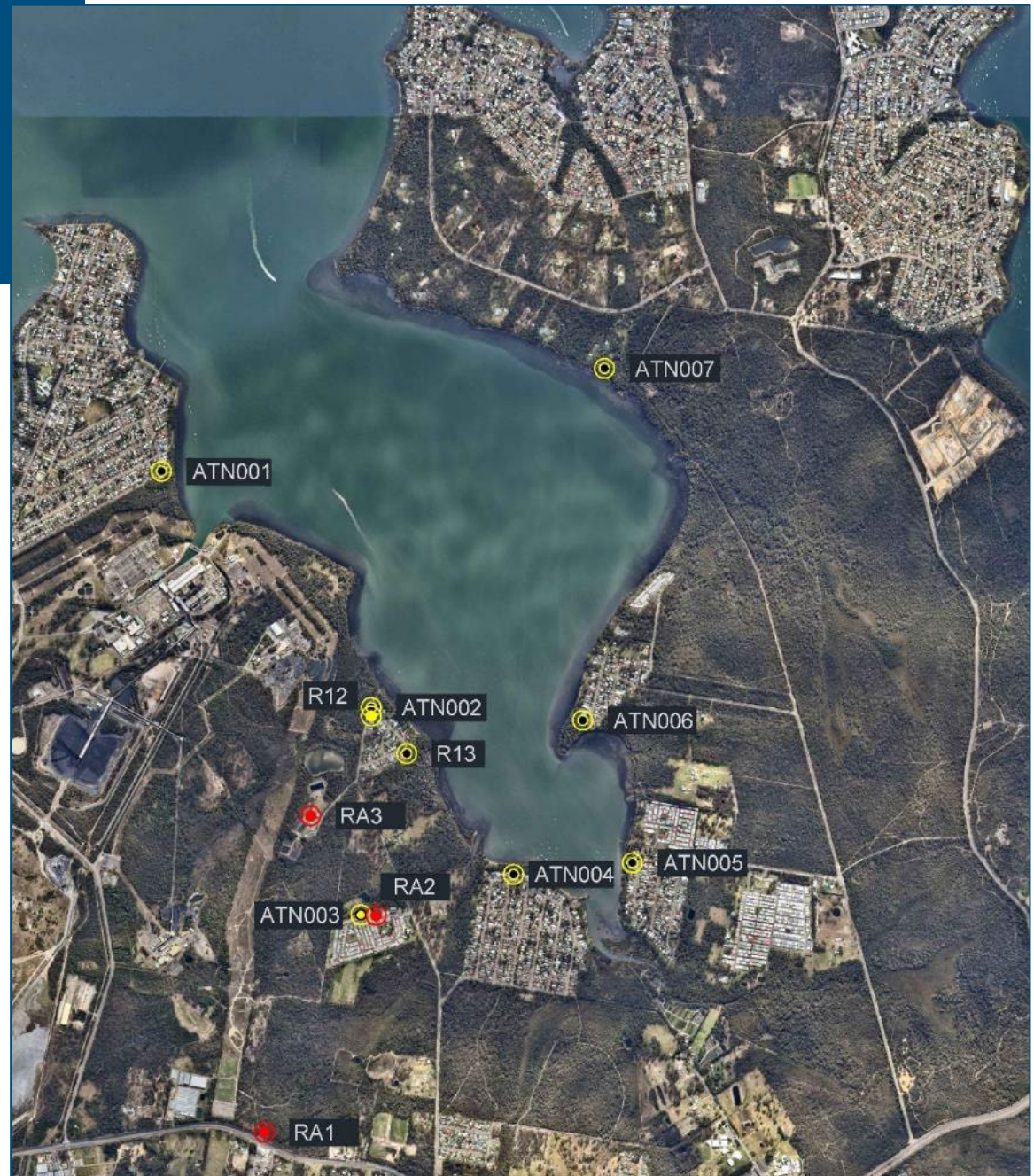


ENVIRONMENTAL PERFORMANCE

Noise Monitoring Locations

Red = MC
Monitoring Location

Yellow = CVC
Monitoring Location



ENVIRONMENTAL PERFORMANCE



Noise Monitoring – MC

No Exceedances for MC noise monitoring between Nov-Jan.

Highest result recorded during monitoring for a location is presented.
Monitoring in Evening (6-10pm) and Night period (10pm onward).
IA = Inaudible.

| Location | Date | Site Contributions, dB | | Noise Limits, dB | | Compliance status |
|---------------|------------|------------------------|-------|------------------|-------|-------------------|
| | | LAEQ | LAMAX | LAEQ | LAMAX | |
| November 2023 | | | | | | |
| RA1 | 8/11/2023 | IA | IA | 36 | 46 | ☑ |
| RA2 | | IA | IA | 40 | 45 | ☑ |
| RA3 | | IA | IA | 39 | 49 | ☑ |
| December 2023 | | | | | | |
| RA1 | 7/12/2023 | IA | IA | 36 | 46 | ☑ |
| RA2 | 6/12/2023 | IA | IA | 40 | 45 | ☑ |
| RA3 | | IA | IA | 39 | 49 | ☑ |
| January 2024 | | | | | | |
| RA1 | 23/01/2024 | IA | IA | 36 | 46 | ☑ |
| RA2 | | IA | IA | 40 | 45 | ☑ |
| RA3 | | IA | IA | 39 | 49 | ☑ |

ENVIRONMENTAL PERFORMANCE



Noise Monitoring – CVC

Chain Valley Colliery Q4 2023 noise monitoring was undertaken on the 5, 6 and 7 December 2023.

The highest result for each monitoring location during the monitoring period is presented.

| Monitoring Point | Site Contributions, dB | | Noise Limit | | Compliance Status |
|--|------------------------------|-------|------------------------------|-------|-------------------|
| | LA _{EQ} (15 min) | LAMAX | LA _{EQ} (15 min) | LAMAX | |
| Chain Valley Colliery Q4 2023 (5, 6 and 7 December 2023) | | | | | |
| ATN001 | IA | IA | 38 | 45 | ☑ |
| ATN002 | IA | IA | 49 | 54 | ☑ |
| ATN003 | IA | IA | 36 | 45 | ☑ |
| ATN004 | IA | IA | 35 | 45 | ☑ |
| ATN005 | IA | IA | 35 | 45 | ☑ |
| ATN006 | IA | IA | 37 | 45 | ☑ |
| ATN007 | 42 (37+5 LFN) | 38 | 46 | 46 | ☑ |
| R12 | IA | IA | 49 | 53 | ☑ |
| R13 | IA | IA | 43 | 49 | ☑ |

ENVIRONMENTAL PERFORMANCE

Flora and Fauna Monitoring – CVC Swamp Oak Forest Biodiversity

Monitoring includes use of plots and species counts / biodiversity observations in the swamp oak forest adjacent the CVC discharge point by certified ecologists.

Monitoring is undertaken annually and weighted scores are presented below:

2023: 77.8%

2022: 67.8%

2021: 68.1%

Should the weighted score be below 60%, a trigger action response plan is enacted.



Community Complaints between 1 November 2023 August and 31 January 2024:

- Chain Valley Colliery - Nil community complaints received in period.
- Mannering Colliery - Nil community complaints received in period.

General Enquiries between 1 November 2023 and 31 January 2024:

- No enquiries received

ENVIRONMENTAL PROJECTS



- CVC Waste Sorting compound constructed.



GENERAL BUSINESS



Questions?